

# ELIMINATOR SD™

## Super Duty Ball Screw Linear Actuators

- Thrusts from 30,000 to 66,000 LBF
- Heavy Wall Steel Construction
- Highest (B10) Life Rating
- Piston with Rugged Anti-Rotation Feature
- Adjustable Limit Switch Positions
- Sealed Chamber Design
- Roller Screw Also Available

## ELIMINATOR SD™ Capabilities

Model Number	Thrust Load Rated (lb <sub>f</sub> )	Thrust Load Max. (lb <sub>f</sub> )	Linear Velocity Max. (in/s)	Travel Length <sup>(1)</sup> Max. (in)	Frame Size (in)	Lead <sup>(2)</sup> (in)	Ball Screw Diameter (in)	Ball Screw Speed Max. (RPM)	Torque @ Ball Screw Max. (in-lb)	Dynamic Capacity per million revs (lb <sub>f</sub> )	Dynamic Capacity per million inches (lb <sub>f</sub> )	Motor/ <sup>(3)</sup> Gearhead Frame Supported Max. (in)	Unit Weight "U" Motor Mount (lb)	Unit Weight "L" Motor Mount (lb)
SD930-06	30,000	45,000	12	06	9	1.00	4.00	720	5,300	68,450	68,450	12	661	680
SD930-12	30,000	45,000	12	12	9	1.00	4.00	720	5,300	68,450	68,450	12	733	752
SD930-18	30,000	45,000	12	18	9	1.00	4.00	720	5,300	68,450	68,450	12	806	825
SD930-24	30,000	45,000	12	24	9	1.00	4.00	720	5,300	68,450	68,450	12	878	897
SD930-30	30,000	45,000	12	30	9	1.00	4.00	720	5,300	68,450	68,450	12	951	970
SD930-36	30,000	45,000	12	36	9	1.00	4.00	720	5,300	68,450	68,450	12	1,023	1,042
SD930-42	30,000	45,000	12	42	9	1.00	4.00	720	5,300	68,450	68,450	12	1,096	1,115
SD930-48	30,000	45,000	12	48	9	1.00	4.00	720	5,300	68,450	68,450	12	1,168	1,187
SD948-06	48,000	70,000	12	06	9	1.00	4.00	720	8,490	76,390	76,390	12	667	686
SD948-12	48,000	70,000	12	12	9	1.00	4.00	720	8,490	76,390	76,390	12	739	758
SD948-18	48,000	70,000	12	18	9	1.00	4.00	720	8,490	76,390	76,390	12	812	831
SD948-24	48,000	70,000	12	24	9	1.00	4.00	720	8,490	76,390	76,390	12	884	903
SD948-30	48,000	70,000	12	30	9	1.00	4.00	720	8,490	76,390	76,390	12	957	976
SD948-36	48,000	70,000	12	36	9	1.00	4.00	720	8,490	76,390	76,390	12	1,029	1,048
SD948-42	48,000	70,000	12	42	9	1.00	4.00	720	8,490	76,390	76,390	12	1,102	1,121
SD948-48	48,000	70,000	12	48	9	1.00	4.00	720	8,490	76,390	76,390	12	1,174	1,193
SD966-06	66,000	90,000	12	06	9	1.00	4.00	720	11,670	84,900	84,900	12	681	700
SD966-12	66,000	90,000	12	12	9	1.00	4.00	720	11,670	84,900	84,900	12	753	772
SD966-18	66,000	90,000	12	18	9	1.00	4.00	720	11,670	84,900	84,900	12	826	845
SD966-24	66,000	90,000	12	24	9	1.00	4.00	720	11,670	84,900	84,900	12	898	917
SD966-30	66,000	90,000	12	30	9	1.00	4.00	720	11,670	84,900	84,900	12	971	990
SD966-36	66,000	90,000	12	36	9	1.00	4.00	720	11,670	84,900	84,900	12	1,043	1,062
SD966-42	66,000	90,000	12	42	9	1.00	4.00	720	11,670	84,900	84,900	12	1,116	1,135
SD966-48	66,000	90,000	12	48	9	1.00	4.00	720	11,670	84,900	84,900	12	1,188	1,207

(1) Intermediate lengths are available; Longer lengths possible.

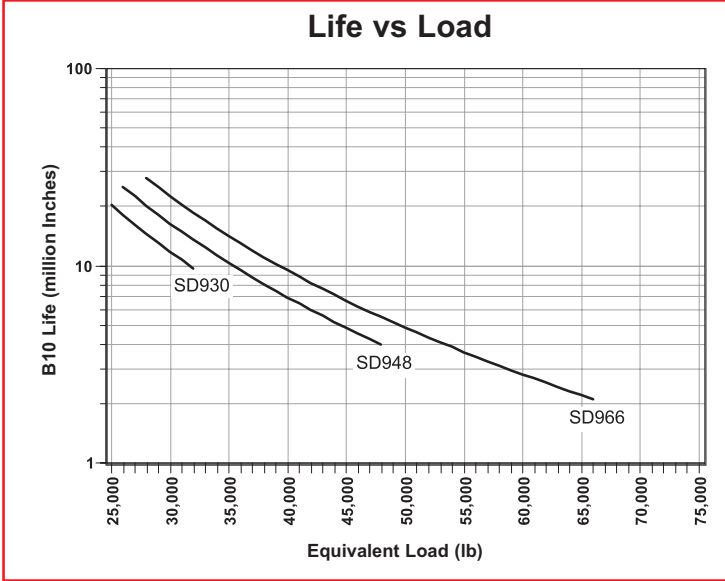
(2) Standard lead accuracy is 0.002 in/ft

Standard backlash is 0.003 in maximum; Optional zero backlash is also available.

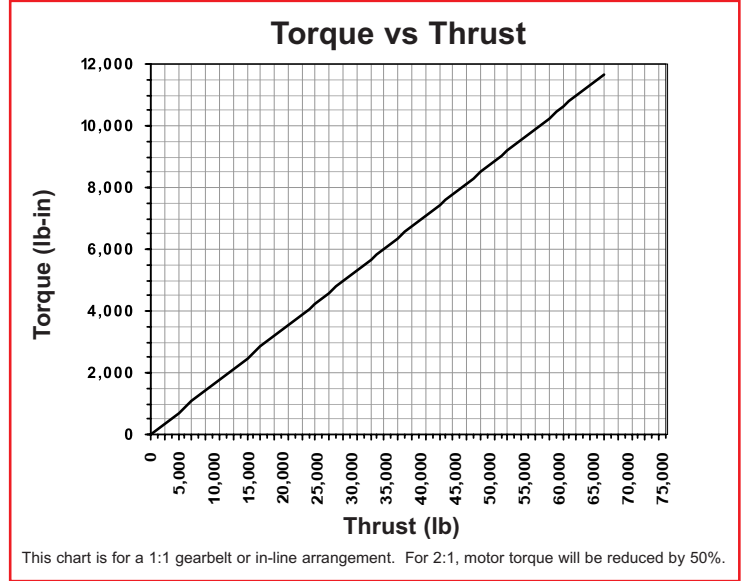
(3) Motor adapter plates are available for larger motor frames.

# ELIMINATOR SD™

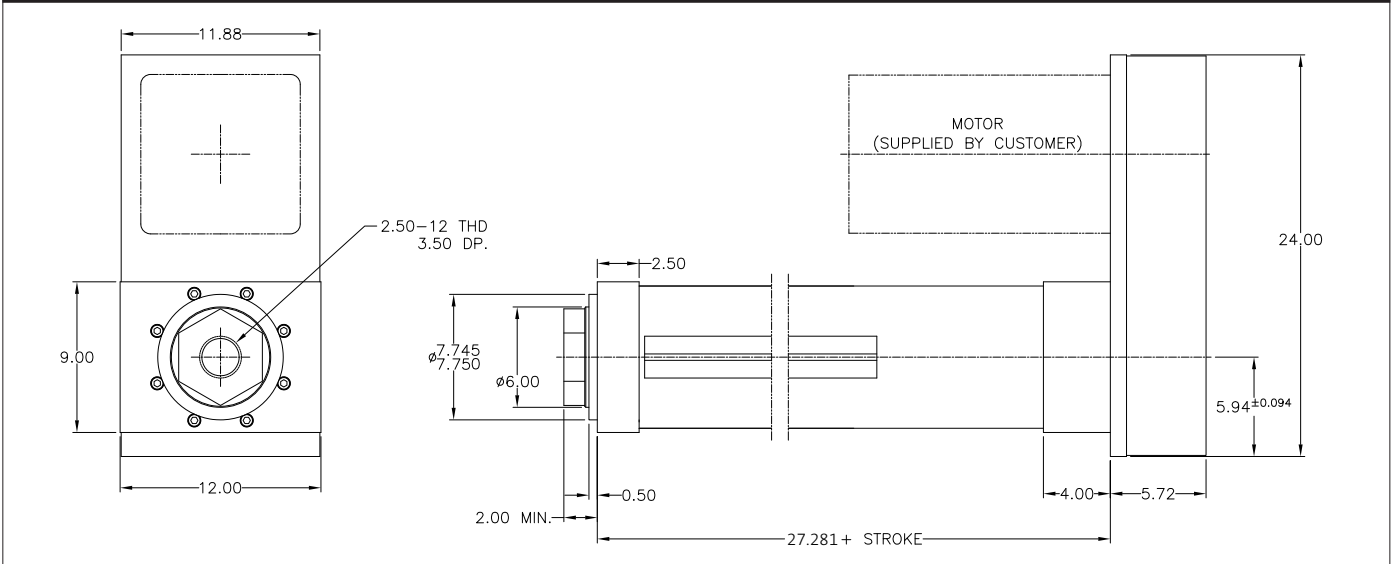
**Graph: Life Vs. Load**



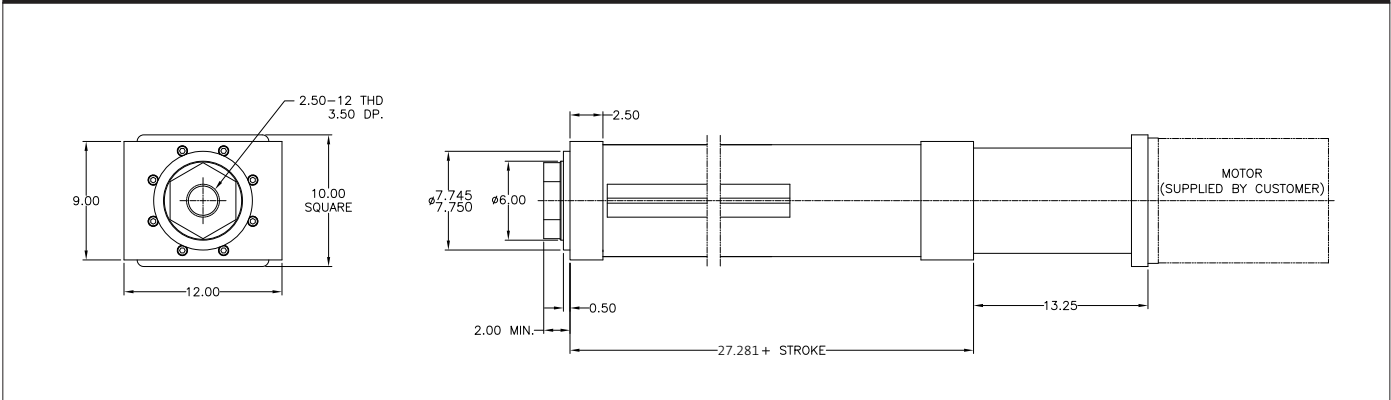
**Graph 2: Torque Vs. Thrust at Ball Screw**



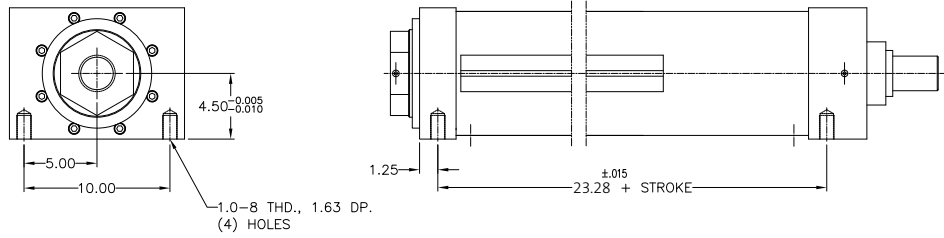
**U-Parallel Offset Motor Dimensions**



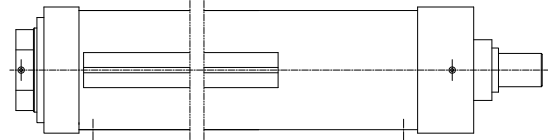
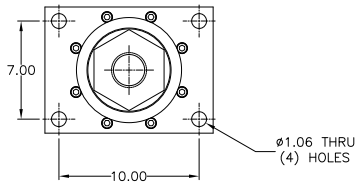
**L-Inline Motor Dimensions**



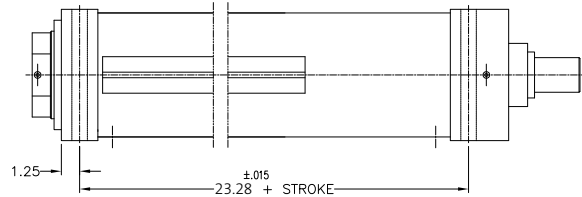
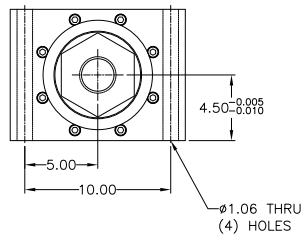
### Bottom Mount Dimensions



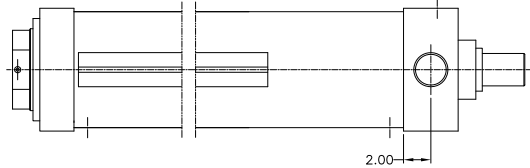
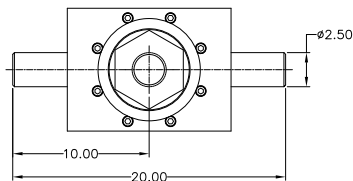
### Front Flange Dimensions



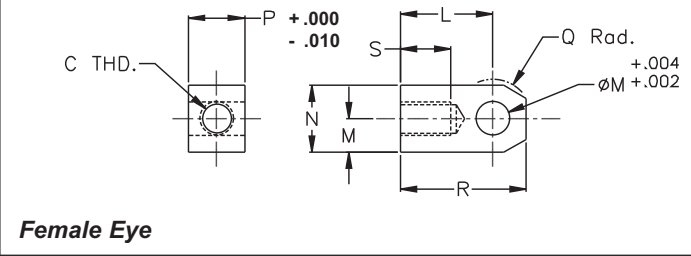
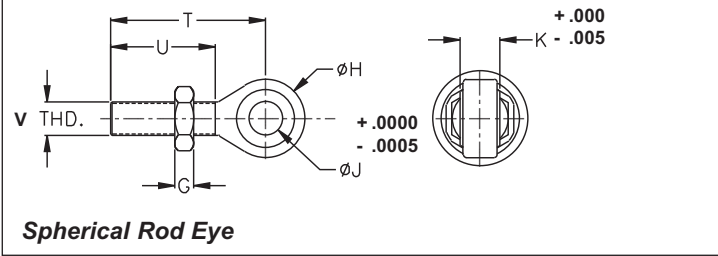
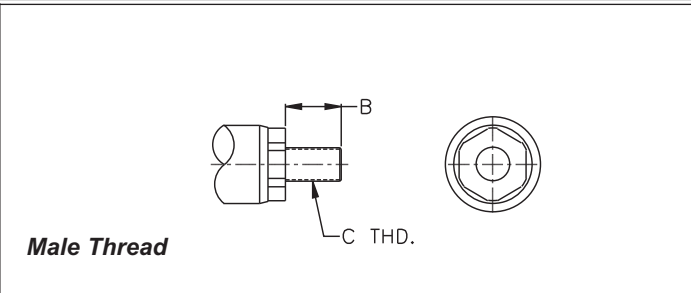
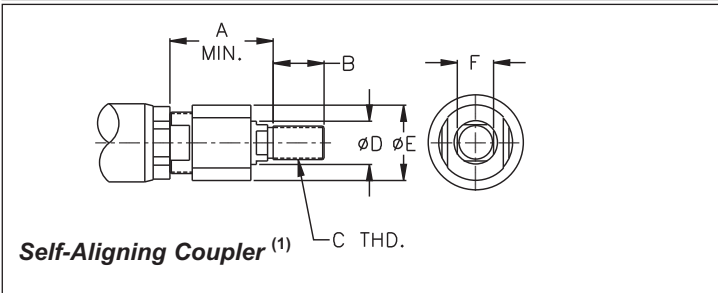
### Foot Mount Dimensions



### Trunnion Mount Dimensions



## Rod End Options



## Rod End Options

Model	A	B	C	D	E	F	G	H	J	K	L	M	N	P	Q	R	S	T	U	V
SD9	6.50	3.50	2.5-12	3.25	7.00	2.88	1.72	5.00	2.00	1.75	6.13	3.00	6.00	3.00	3.25	9.13	3.50	8.00	4.63	2.00-12

(1) Zero backlash version also available

## How To Order:

Base Number	Options	Special
<div style="display: flex; justify-content: space-around;"> <div style="border: 1px solid black; padding: 5px;">S</div> <div style="border: 1px solid black; padding: 5px;">D</div> <div style="border: 1px solid black; padding: 5px;">9</div> <div style="border: 1px solid black; padding: 5px;"> </div> <div style="border: 1px solid black; padding: 5px;"> </div> </div>	<div style="display: flex; justify-content: space-around;"> <div style="border: 1px solid black; padding: 5px;"> </div> <div style="border: 1px solid black; padding: 5px;"> </div> <div style="border: 1px solid black; padding: 5px;"> </div> <div style="border: 1px solid black; padding: 5px;"> </div> <div style="border: 1px solid black; padding: 5px;"> </div> <div style="border: 1px solid black; padding: 5px;"> </div> <div style="border: 1px solid black; padding: 5px;"> </div> <div style="border: 1px solid black; padding: 5px;"> </div> <div style="border: 1px solid black; padding: 5px;"> </div> <div style="border: 1px solid black; padding: 5px;"> </div> <div style="border: 1px solid black; padding: 5px;"> </div> <div style="border: 1px solid black; padding: 5px;"> </div> <div style="border: 1px solid black; padding: 5px;"> </div> <div style="border: 1px solid black; padding: 5px;"> </div> <div style="border: 1px solid black; padding: 5px;"> </div> <div style="border: 1px solid black; padding: 5px;"> </div> <div style="border: 1px solid black; padding: 5px;"> </div> <div style="border: 1px solid black; padding: 5px;"> </div> <div style="border: 1px solid black; padding: 5px;"> </div> <div style="border: 1px solid black; padding: 5px;"> </div> <div style="border: 1px solid black; padding: 5px;"> </div> </div>	<div style="display: flex; justify-content: space-around;"> <div style="border: 1px solid black; padding: 5px;"> </div> <div style="border: 1px solid black; padding: 5px;"> </div> <div style="border: 1px solid black; padding: 5px;"> </div> <div style="border: 1px solid black; padding: 5px;"> </div> </div>
<p><b>Frame Size (in):</b> 9</p> <p><b>Capacity (lb):</b> x1000</p> <p><b>Unit Mounting Option:</b></p> <p><b>MB</b> Bottom Mount  <b>FF</b> Front Flange  <b>MF</b> Foot Mount  <b>TR</b> Rear Trunnion</p> <p><b>End Effector/Rod End:</b></p> <p><b>E</b> Female Eye  <b>F</b> Female Thread  <b>A</b> Self-Aligning Coupler  <b>M</b> Male Thread  <b>S</b> Spherical Rod Eye</p>	<p><b>Standard Stroke Length (in):</b></p> <p><b>Gearbelt Reduction:</b></p> <p>00- Direct Coupled              10- 1:1              20- 2:1</p> <p><b>Motor Position</b></p> <p>1, 2, 3, 4              0 = Inline              (refer to figure)</p> <p><b>Configuration:</b></p> <p><b>L-</b> In-Line  <b>U-</b> Parallel Offset</p>	<p><b>Custom Length (in):</b> 00.00</p> <p><b>N.C. Switch Qty:</b> 0, 1, 2, 3, etc.</p> <p><b>N.O. Switch Qty:</b> 0, 1, 2, 3, etc.</p> <p><b>Switch Type:</b></p> <p><b>A</b> - Hall Sourcing    PNP  <b>B</b> - Hall Sinking    NPN  <b>C</b> - Reed</p>